

Community Transition Team Fact Sheet



The Forestry Transition Program has been developed to assist you and your community through the transition out of native forest harvesting.

As the industry transitions, the Forestry Transition Program includes dedicated support to ensure the continued strength of local communities. The support includes a team of locals that is working with towns that may be affected by the plan, with the team currently in place in Gippsland, Central Highlands and the North East.

How we will support you?

The team is ready to assist local communities in understanding the changes to the forestry industry. We will work with locals to develop long term partnerships to understand the level of support you need and provide advice on programs and services that will assist your community.

How will this support benefit your community?

- A central point of contact for information and connections to the most appropriate services
- Building knowledge and understanding of what is important to the community
- Work together and build community strength by identifying new opportunities
- Provide practical support and guidance through funding applications when it becomes available.

Support on offer

Local Development Strategy Grants

Grants of up to \$500,000 are available to help 11 communities that are affected by the Forestry Transition Program.

The grants provide support for communities to plan for their future including how they can create different and sustainable jobs in their area.

Community Development Fund

The \$22 million [Community Development Fund](#) supports the delivery of early Local Development Strategy outcomes.

The fund allocates financial support to 11 priority Local Development Strategy communities.

Forestry Transition Fund

The \$36 million fund will support actions from the local development strategies as well as communities not eligible for a Local Development Strategy

Round 1 supports the immediate creation of jobs in towns and communities affected by the Forestry Transition Program, particularly jobs for displaced timber workers.

To learn more about the program

To stay up to date on the Forestry Transition Program, visit: www.vic.gov.au/forestry

Phone: **1800 318 182**

Email: forestrytransition@djpr.vic.gov.au

Local contacts

East Gippsland LGAs

Ruth Fitzclarence

Community Transition Support Officer

Phone: **0400 776 040**

Email: ruth.fitzclarence@ecodev.vic.gov.au

Wellington Shire LGA

Jeff Svigos

Senior Project Manager

Phone: **0436 661 065**

Email: jeff.svigos@ecodev.vic.gov.au

Yarra Ranges and Baw Baw LGAs

Yoshi De Wilde

Community Transition Support Officer

Phone: **0499 830 051**

Email: yoshi.dewilde@ecodev.vic.gov.au

Murrindindi, Benalla, Towong and Gannawarra LGAs

Jenny Pena

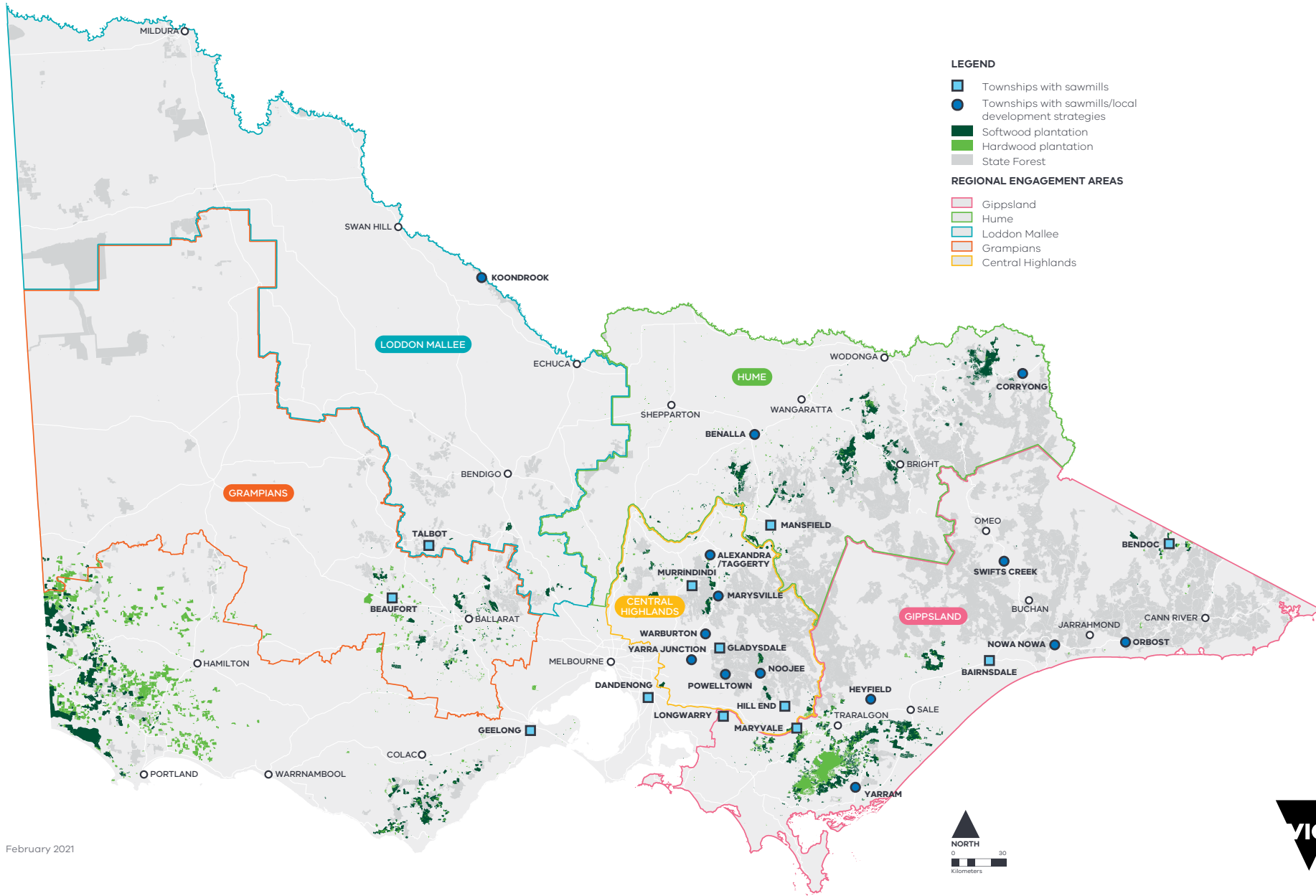
Community Transition Support Officer

Phone: **0400 447 342**

Email: jenny.pena@ecodev.vic.gov.au

FORESTRY TRANSITION PROGRAM

Where we will work



February 2021